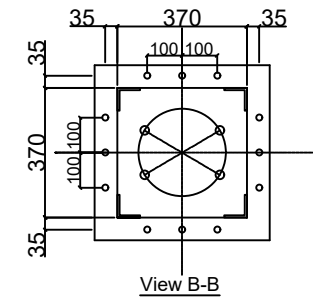
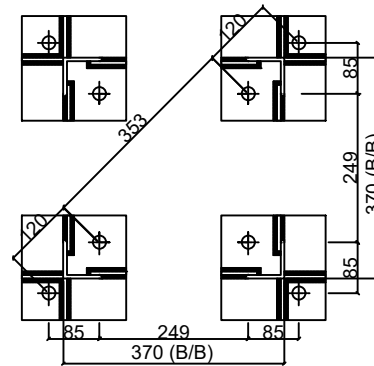
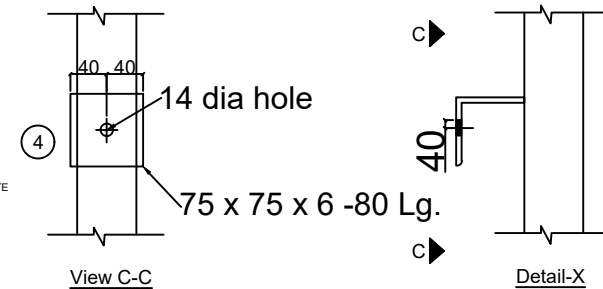
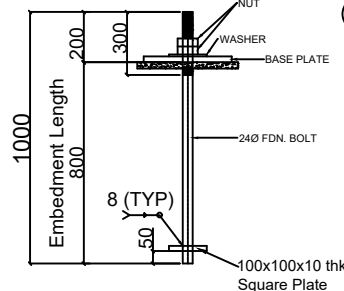
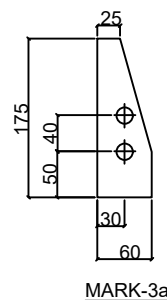
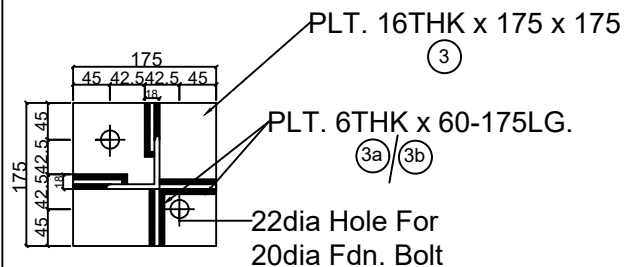


Sl No.	Mark No.	Member	Section	Length IN MM	Qty./Str ucture No.s	Unit Wt KG/M or KG/Sq	Wt/Pc Kgs	Wt/Set Kgs
1	PI-1	LEG	65x65x6	3072	2	5.8	17.818	35.64
2	PI-2	LEG	65x65x6	3072	2	5.8	17.82	35.64
3	PI-3	BASE PLT	16x175	175	4	125.6	3.847	15.39
4	PI-3a	STIFFENER	6x60	175	2	47.1	0.495	0.99
5	PI-3b	STIFFENER	6x60	175	14	47.1	0.495	6.93
6	PI-4	EARTH CLT	75x75x6	80	6	6.8	0.544	3.26
7	PI-5	BRACING	45x45x5	557	4	3.4	1.894	7.58
8	PI-5x	BRACING	45x45x5	530	24	3.4	1.802	43.25
9	PI-6	TOP SUPPORT	65x65x6	350	4	5.8	2.03	8.12
10	PI-7	TOP PLT	12x500	500	1	94.2	23.55	23.55
TOTAL WEIGHT OF THE STRUCTURE EXCLUDING FASTENERS (IN KG):								180.35



Note:

1. All the dimensions are in mm.
2. The Mounting details shall be as per the approved equipment drawing.



DRAWING:-

**EQUIPMENT SUPPORT STRUCTURE
FOR 132 KV PI**